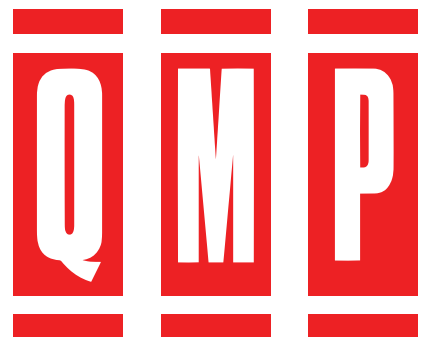
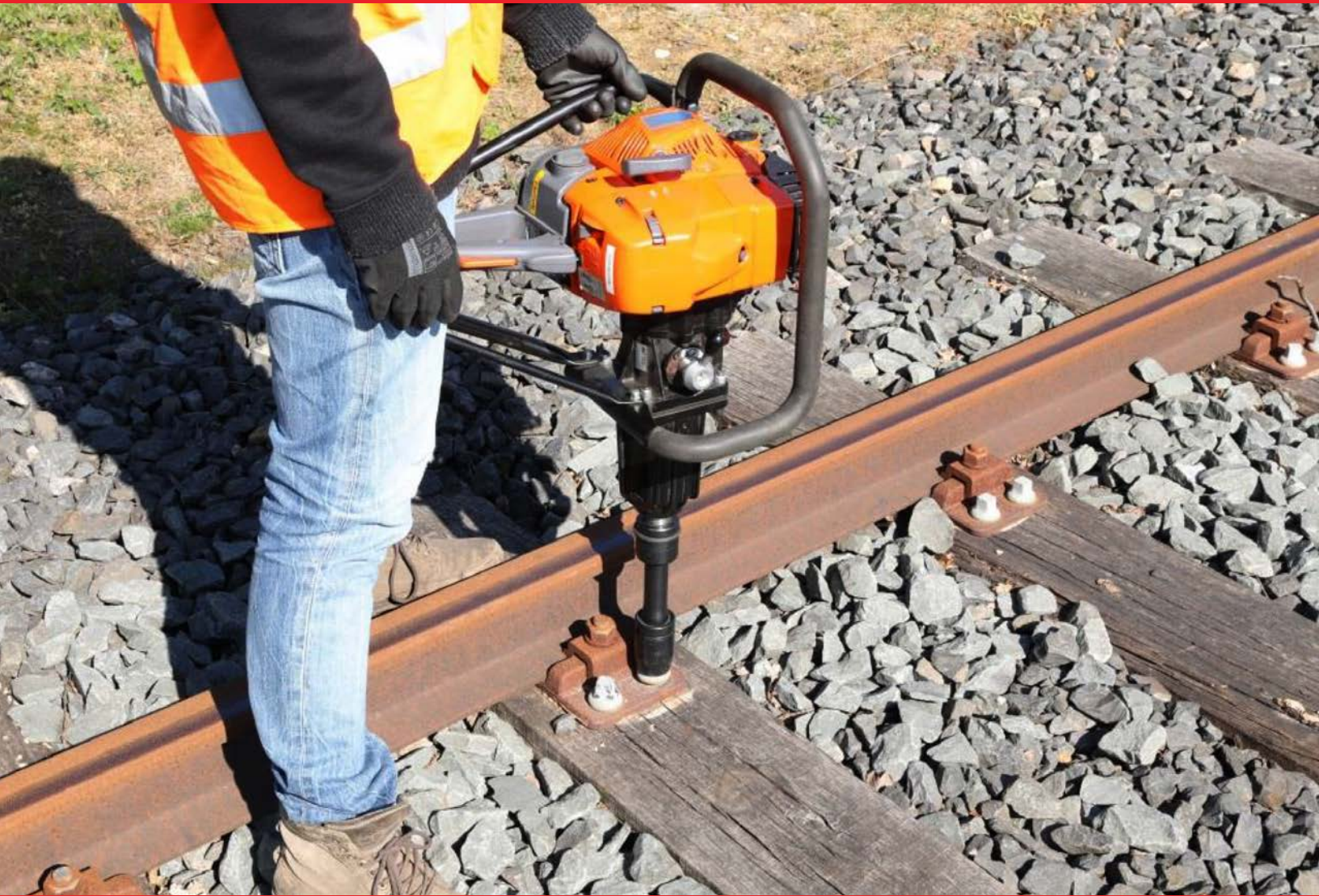


Product Catalog

Service, Supplies, and Maintenance of Way Tools for Canadian Rail Systems
Since 1987



About QMP

Premium and Custom Engineering Solutions

Since 1987 QMP Ltd. is the leading Canadian Railway System distributor for Maintenance of Way (MOW) services, supplies and applications.

We offer Airtec™ tools and a variety of other high performance MOW equipment and supplies.

The QMP Team



Colin Anderson
Account Manager
Western Canada

+1 306.514.7399
CAnderson@QMPLTD.com



Rick Hill
Account Manager
Western Canada

+1 636.638.2597
RickHill@QMPLTD.com



Gina Huck
Customer Service

+1.636.465.9845
GHuck@QMPLTD.com

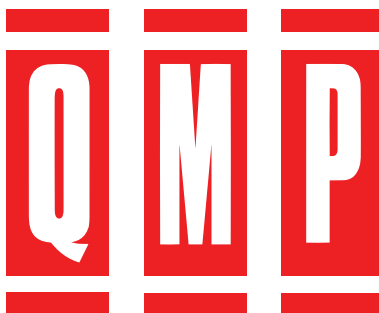


Marc LeBlanc, RSE
Technical Sales and Field Service

+1 519.551.8797
MLeblanc@QMPLTD.com

Catalog Index

Tools Accessories and Attachments	Page Number
Airtec Master 35	4
Airtec Master 35 Accessories	5
Airtec Master Trolley	6
Husqvarna Gas Rail Saw	7
BTE-3000 Tie Changer	8
RCC Tie Master	9
Twister T235	10
E-Clip Applicator	11
Pregauger	11
BTE	12
BTI	13



17635 - 111 Ave.
NW Edmonton, AB T5S 0A1 Canada
+1 636.937.4390 | QMPLTD.com

The NEW Airtec Master 35®

AIR-MASTER35-N



Benefits

- Faster operation.
- Fit/remove Joint Bar nuts and Lag screws in under three seconds.
- Increased torque to 2500 Nm/1850 Ft/lbs.
- Lower vibration exposure.
- Significantly lower emission levels. Complies with latest EUR5 and EPA 3 Standards.
- Reduced weight.

The NEW Master 35® Impact Wrench has the same reliable, high quality impact mechanism and gear box which has been used during the past thirty years and is now powered by a more powerful Engine which complies with EUR5 and EPA3 low emission Standards.

Because of its increased power and high engineering specification it will remove/fit most Coach Screws and Track Bolts in under three seconds and using one of our Safety Quick Release Auger Attachment drill holes in Wooden Sleepers.

It is easily carried by one person, operator friendly, has good balance, easy to repair and because it is so fast it reduces the potential harm of vibration exposure especially when fitted to our Tool Carrier.

Impact Wrenches, Tool Carriers, Spare Parts and Accessories are available from stock held by QMP.



Specifications

DIMENSIONS	Length: 600mm Height: 284mm Width: 452mm	WEIGHT 17.9kgs
ENGINE	Two stroke/cycle Special Airtec EMAK 63.4 c.c. complying with EUR5 and EPA3 Standards	
FASTENER TYPE	Bolt: 16-32mm diameter Rectangular: All sizes Hexagon: Up to 83mm Square/Bi-Square: Up to 67mm	
NOISE LEVELS	Operation levels based on ISO3744 Acoustic Pressure (LpA): 101.7 dBA Power (LWA): 114.8 dBA <i>Always wear ear protection</i>	
SQUARE DRIVE	Standard 1"	
TORQUE RANGE	350 – 1850 ft/lbs approximately It is possible to generate higher torques under special conditions. The Master will loosen any screwed fastener previously tightened by any other Petrol/Gas Driven Impact Wrench.	

VIBRATION EXPOSURE

Vibration exposure is more important than vibration e.g. a low vibration machine which takes a long time to perform a task generates higher vibration exposure than a higher vibration machine which performs a task much more quickly.

The following data is based on practical on track testing carried out in the UK in February 2020.

Joint Bar Nuts - 2.25 seconds

	Vibration	Trigger Time	AV		LV	
			No of Fasteners	Trigger Time	No of Fasteners	Trigger Time
Tightening	12.28m/s2	20 minutes	533	80 minutes	2133	
Loosening	11.05m/s2	25 minutes	667	98 minutes	2613	

Lagscrews – 2.5 seconds

	Vibration	Trigger Time	AV		LV	
			No of Fasteners	Trigger Time	No of Fasteners	Trigger Time
Tightening	11.90m/s2	21 minutes	504	85 minutes	2040	
Loosening	14.72m/s2	14 minutes	336	55 minutes	1320	

The NEW Airtec Master 35® - Accessories

Master 35 Tool Carrier

Part No.	
1750.0100	Standard Gauge
1750.0100BV	Standard Gauge Bridge Version
2801.7550	Master 35 Tool Carrier Accessory Vertical for Lag Screws up to S/No. ATE20 A105
2801.7565	Master 35 Tool Carrier Accessory Vertical for Lag Screws from S/No. MA20 A001
2801.7560	Master 35 Tool Carrier Accessory Horizontal for Joint Bar Nuts

Please Note : Narrow and Broad Gauge Track versions also available

BOX Metal Carrying Box with hinged lid and rubber strips on base

AUGAM Augering Attachment Quick Release – 7/16" Hex American

Impact Sockets 1" Square Drive Bi-Square

4" long 8 point						4" long 4 point	
<u>Part No.</u>	<u>Parallel</u>	<u>Part No.</u>	<u>Parallel</u>	<u>Part No.</u>	<u>Tapered</u>	<u>Part No.</u>	<u>Parallel</u>
559	3/4"	434	1 11/16"	559T	3/4"	435T	1 3/4"
715	13/16"	437	1 7/8"	430T	7/8"	436T	1 13/16"
430	7/8"	435	1 3/4"	425T	1"	427T	2"
485	15/16"	436	1 13/16"	519T	1 1/8"	522T	2 1/8"
425	1"	438	1 15/16"	518T	1 3/16"	442T	2 3/16"
519	1 1/8"	427	2"	433T	1 1/4"	428T	2 1/4"
518	1 3/16"	521	2 1/16"	429T	1 5/16"	722T	2 3/8"
433	1 1/4"	522	2 1/8"	524T	1 3/8"		
429	1 5/16"	442	2 3/16"	440T	1 7/16"		
524	1 3/8"	428	2 1/4"	431T	1 1/2"		
440	1 7/16"	439	2 5/16"	441T	1 9/16"		
431	1 1/2"	421	2 1/2"	432T	1 5/8"		
441	1 9/16"	443	2 5/8"	434T	1 11/16"		
432	1 5/8"	486	2 3/16" Hex	437T	1 7/8"		

Impact Sockets 1" Square Drive

Part No.	
454	1 1/16" x 13/16" Rectangular
454S	1 1/16" x 13/16" Rectangular Thin Wall
454/2BUT	1 1/16" x 13/16" Rectangular Butterfly
511	31/32" x 25/32" Rectangular Standard
454D	1 1/16" x 13/16" Rectangular Deep
454/2DBUT	1 1/16" x 13/16" Rectangular Butterfly Deep

Quick Release Sockets 7/8" Square Drive 2 3/4" long

Part No.	
7878SQSP	7/8" Square
781SQSP	1" Square
782128SP	1 1/16" x 13/16" Rectangular
782128SBUT	1 1/16" x 13/16" Rectangular Butterfly
782428SP	1 1/16" X 31/32" Rectangular
781516SQSP	15/16" Square
78118BSSQ	1 1/8" Bi-Square
811516BSSP	1 15/16" Bi-Square
7811116BSP	1 11/16" Bi-Square

Extensions 1" Square Drive

Part No.	
414	6"
408	10"
407	8"
409	12"

Quick Release Sockets 7/8" Square Drive 4" long

Part No.	
781.516BDSP	1 5/16" Bi-Square

406 Universal Joint 1" Square Drive

301 Rubber Ring

NOGO Master 35® No Go Gauge

Steel Pin

Part No.	
299	1 7/8"
299/1	2 1/4"
299/2	2 5/8"

Airtec Master Trolley

1750.0100 - Standard 1435mm Track Gauge



Features

- Adjustable arm for use with different weight tools
- Can be assembled/dismantled in a few minutes without the use of tools
- Use vertically and horizontally by changing accessory*
- Main body can be locked down for safe transportation
- Insulated wheels
- Can be inclined up to 5°
- Simple wheel brake

An optional Deadman Handle Braking System can be fitted on request

The Airtec Master Trolley is designed for use with the Master 35 Gas Impact Wrench but it can also be used with Hydraulic Tools including Stanley spike drivers and spike pullers.

Using the Master Impact Wrench, Accessories and Trolley together reduces manual handling, is easy and quick to use, improves operator comfort and increases productivity.



Specifications

DIMENSIONS	Length:	1080mm	WEIGHT	Wheel Assembly:	10kg
	Width:	1625mm		Cross Bar:	3kg
	Height - Open:	870mm		Main Frame:	17kg
	Height - Locked:	440mm		Total:	30kg

Accessories*

2801.7550	Wrench Bracket for vertical use on Lag screws
2801.7565	Wrench Bracket for vertical use on Lag screws
2801.7560	Suspension Kit for horizontal use on Joint bars
	Hydraulic tool mount for spiker/tamper
	Hydraulic tool mount for spike puller



2801.7550



2801.7560

Husqvarna K 1270 - 16" Rail Saw

K-1270-H

An exceptionally lightweight saw, the Husqvarna K 1270 is perfect for railroad maintenance crews that need to make quick, accurate repairs.

Applications

- Cutting rails in maintenance work on train, tram and underground rail systems.

Benefits

- Equipped with double attachment mountings to allow cutting from both directions.
- Fast, stable mounting of the attachment on the rail.
- Exact, right-angle cuts in all planes.
- Active Air Filtration™, centrifugal air cleaning in three stages, extends product life and service intervals.

Features

- Air-cooled 2-stroke engine
- Active Air Filtration™
- SmartCarb™
- EasyStart™
- Self-lubricating clutch bearings
- Replaceable arbor bushing



Part No.

Spare Parts

5102414105	Air Filter
578398201	Replaceable arbor bushing 20mm
581605403	Replaceable arbor bushing 30mm
506379622	Kit
506379622	Spark plug
506264111	Fuel filter complete
501691702	Combination wrench
544976301	Belt 14"
544976302	Belt 16"
506275507	Complete starter assembly



Specifications

BLADE	Size - 14" (350mm) 16" (400mm) Max. cutting depth - 14" blade: 4.6" (118mm) 16" blade: 5.7" (145mm)
POWER	7.9 hp/5.8 kW @8400 rpm
DISPLACEMENT	7.3 cu" (119cm ³)
WEIGHT	1270: 14" (350mm): 33.7lb (15.3kg) 16" (400mm): 35.3lb (16kg)
FUEL CAPACITY	40oz (1.2 liters)
SOUND	Noise: Sound power level, guaranteed LWA: 117 dB(A) Levels: Equivalent sound pressure level at the operator's ear: 103 dB(A)
VIBRATION	Front Handle Equivalent: 5 m/s ² Rear Handle Equivalent: 14": 4,1 m/s ² 16": 3,6 m/s ²

Rail Cutting Attachment

506226611

The RA10 attachment has a zero-play needle and ball bearings.

It fits quickly to the rail and provides right-angle cuts on all planes. A folding guide marks the exact position of the cut.

Weight: 11.7lb

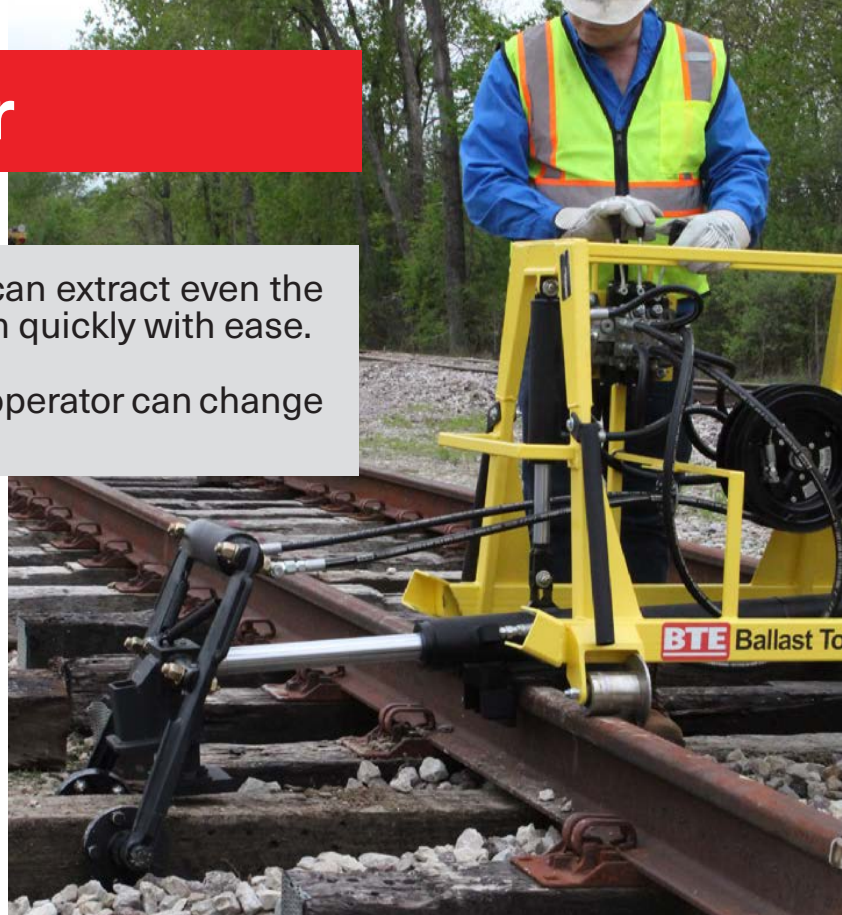


BTE-3000 Tie Changer

BTE-3000

Light but with ample power, the BTE-3000 can extract even the toughest cross switch ties and replace them quickly with ease.

With an excellent view of the work area, the operator can change out up to thirty-five or more ties an hour.



Applications

- Extracts and inserts cross, switch and joint bar ties
- Spot tie work

Specifications

WEIGHT	Approximately 970 lbs.
EXTRACTING FORCE	20,000 lbs.
INSERTING FORCE	10,250 lbs.
GRIPPING FORCE	10,000 lbs. distributed over both grippers
POWER PACK TYPE	Matweld 0100K Power unit (Refer to Matweld's operations manual for specs)

Benefits

- Incomparable Portability
- Easy Transportation
 - It can easily be handled by hi-rail crane truck
 - Equipped with fold down carrying handles, it can be lifted into a pick-up truck by small gang forces
- Tremendous Power
 - 35 plus tie change outs per hour
 - Can be powered from any vehicle with 10 GPM, 2,000 psi hydraulic power via detachable unit

BTE-3000 Simplicity



HYDRAULIC HOSE DRUM

- Always keeps main cylinder hoses tight, safe and out of the way



QUICK DISCONNECTS

- Connects to 10 GPM, 2,000 psi power unit
- Connects to truck hydraulic system
- Allows operation of Spike Puller, Spike Driver and Tie Tampers



JAWS

- Grips ties quickly and precisely
- 10,000 lbs. of gripping force prevents slipping
- Self-centering tie grips
- Raised in seconds to clear way side obstacles



THREE STATION CONTROL VALVE

- Easy to understand, simple to use
- In/out - 2 speeds
- Up/down
- Grip/release

RCC Tie Master

RCC-1000



The RCC Tie Master has been developed for the cost efficient tie replacement program.

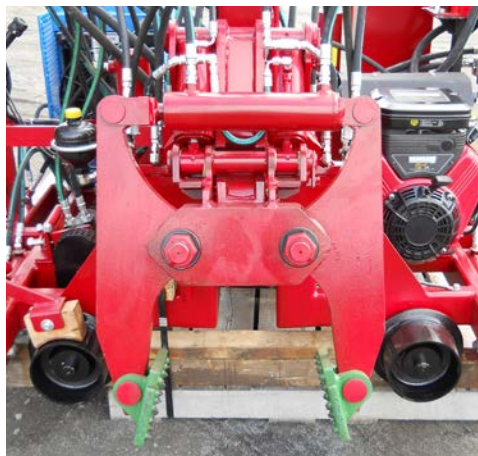
The machine has a two-stroke extraction, with high production characteristics.

Advantages

- Self-Propelled
- Two Rail Lifting Cylinders
- Four Adjustable Locking Rail Clamps
- Ability to Carry Ties & Timbers
- Compact Design
- Ease of Operation
- Affordable
- Optional Equipment for Versatility

Standard Equipment

- Double Row Chain & Sprockets
- Aeroquip Hose & Fittings
- 8" Machined Wheels
- Morse Control Cables
- Low Oil Warning Light
- Valve Hose Guard
- Carbide Tip Tie Pads Operators Seat
- Center Lifting Eye



Specifications

ENGINE	23 HP Briggs & Stratton	TRAVEL SPEED	6 MPH
FRAME	Rigid Welded Tubular Frame	WEIGHT	2300 lbs.
DRIVE SYSTEM	Hydraulic Drive Motor Chain Driven	APPROX. HEIGHT	60"
BRAKE	Parking	WIDTH	86"
HYDRAULIC SYSTEM	Vane Type Pump	LENGTH	89"
HYDRAULIC TANK	28 US Gallons	BROOM EXTENDED	131"
FUEL TANK	10 US Gallons	TRANSPORTING	68
COMBINATION WRENCH	501691702		

Twister T235

T235

The Twister 235 (T235) is a diesel rotary screw air compressor unit. This mobile or truck-mounted compact compressor is designed to efficiently clear ice, snow, and other debris off switches and crossings.

The T235 has an extensive line of applications. It is lighter weight, uses less fuel, and performs at a very high level.



The World's First Diesel Powered Compact Air Compressor Unit

Applications

- Air Up To 235 cfm/180 PSI
- Service Trucks
- Compressor Stations
- Drilling & Service Rigs
- Construction
- Mining & Logging
- Lube Units
- Stationary Units
- Remote Location
- Highway Painting
- Pipeline Construction
- Instrument Air

Standard Features

- Tier 4 Certified
- Safety Shutdown Protection
- Over Temperature Protection
- Continuous Duty
- Auto Idle Control
- Aluminum Enclosure
- Powder Coated Finish
- Wired Remote Controls
- Hour Meter
- Internal Vibration Isolation
- 2 Year Warranty
- Easy Installation

Optional Features

- Direct Mount Hydraulic Pump
- Generator 4 – 6 Kw 120/240V
- Welder
- Auto Start/Stop
- Gauge Package
- 12/24 Volt D.C. Booster Pak
- Positive Air Shut Off
- Arctic Package
- Exhaust Scrubber
- Fuel Tank
- Heli-Portable Package



Specifications

WEIGHT	Standard Unit: 865 lbs
SIZE	Standard Unit: 23.5" (w) x 53.25" (l) x 31.25" (h)
AIR OUTPUT	Up to 235 cfm and up to 185 psi

E-Clip Applicator

QMP-E-CLIP

Advantages

- Lightweight, but strong
- Excellent leverage from angled bar
- Heavy duty bolts on stress points
- Rotating top handle for comfort
- Replaceable tips
- Roller guide on base for easier pulling

Specifications

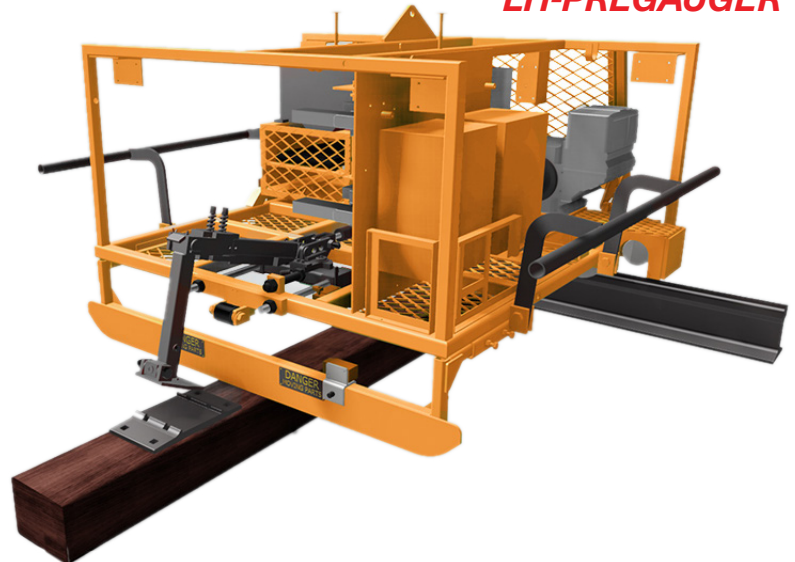
WEIGHT 15 lbs.



L&H Industrial Pregauger

LH-PREGAUGER

The L&H Industrial Pregauger quickly and accurately gauges plates on tangent track or curves, with or without rail clips.



Benefits

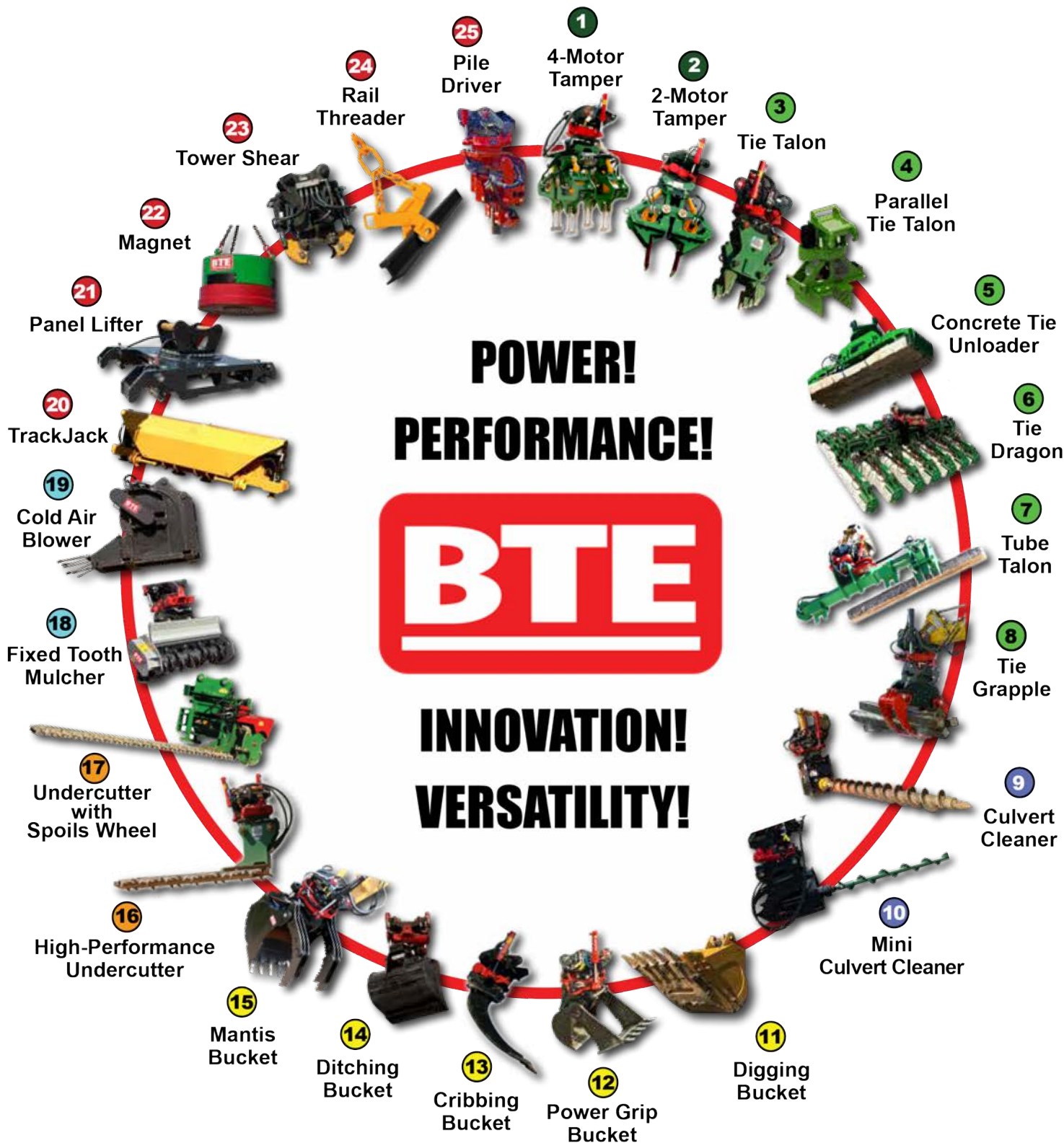
- **High speed.** The L&H Automatic Pregauger can align up to 21 plates per minute under normal working conditions.
- **Hands-free operation.** Automation frees the operator for other tasks while the machine is working.
- **Safety.** The pregauger has emergency stop buttons on all four corners and stop bars on each end, for fast shut-off from any side of the machine.
- **Dual-mode.** Choose between fully automatic or manual operation.
- **Bi-directional.** The machine, which operates in either direction, can easily change direction or rail with just a few minor adjustments.
- **Easy maintenance.** The maintenance access on the machine is easy and user friendly.



Ballast Tools Equipment

BTE designs, builds, sells and leases innovative high-performance railroad track maintenance equipment, powerful hi-rail machines, and versatile attachments. BTE machines are heavily engineered and field-tested to help ensure reliable and effective on-track operations.

For more information contact your QMP representative or go to btequip.com

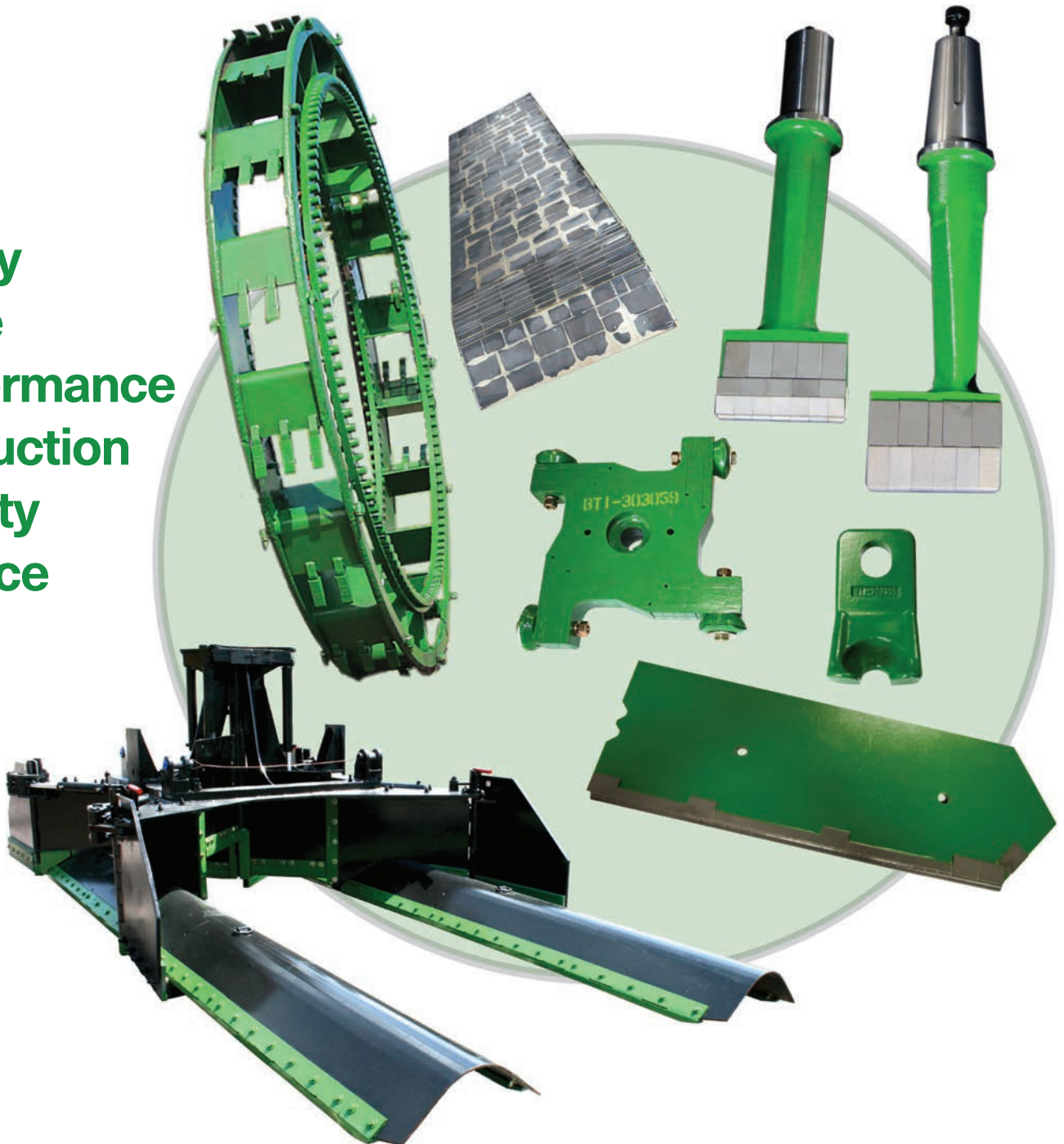


BTI manufactures wear-proof MOW parts that meet the challenges of abrasive wear, tough conditions, and high-performance expectations. With 50 years of experience in Tungsten Carbide wear-proofing, BTI offers an extensive line of wear parts for most all MOW equipment.



For more information contact your QMP representative or go to BallastTools.com

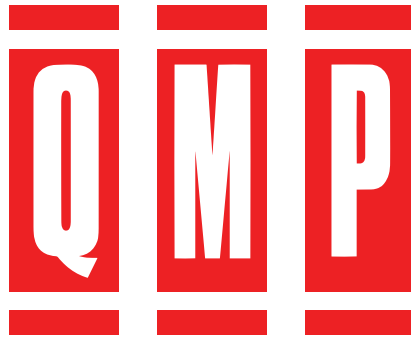
- Safety
- Value
- Performance
- Production
- Quality
- Service



Tamping Tools • MOW Wear Parts • Ballast Regulator Parts • Ballast Undercutters and Cleaners

Notes

[illegible]



**Service, Supplies, and Maintenance of Way
Tools for Canadian Rail Systems**
Since 1987

17635 - 111 Ave.
NW Edmonton, AB T5S 0A1 Canada
+1 636.937.4390 | QMPLTD.com